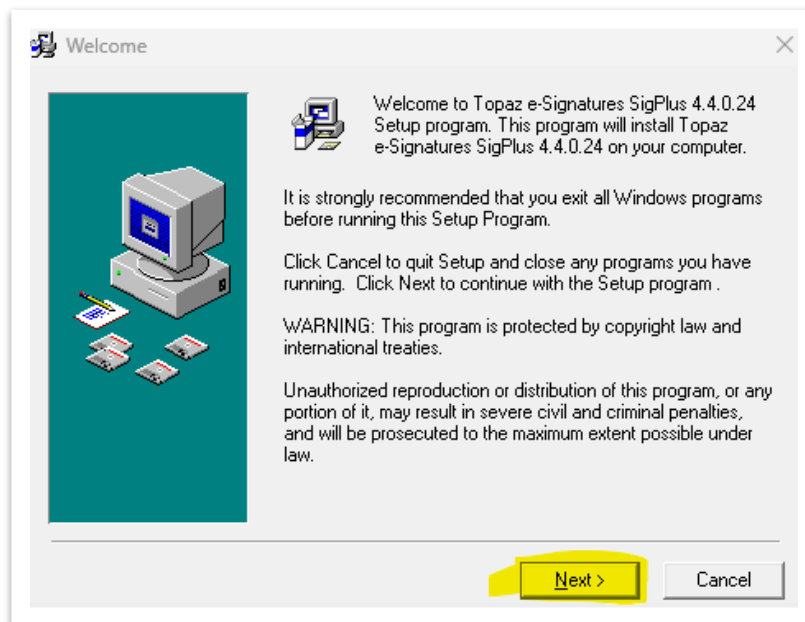


# How To...

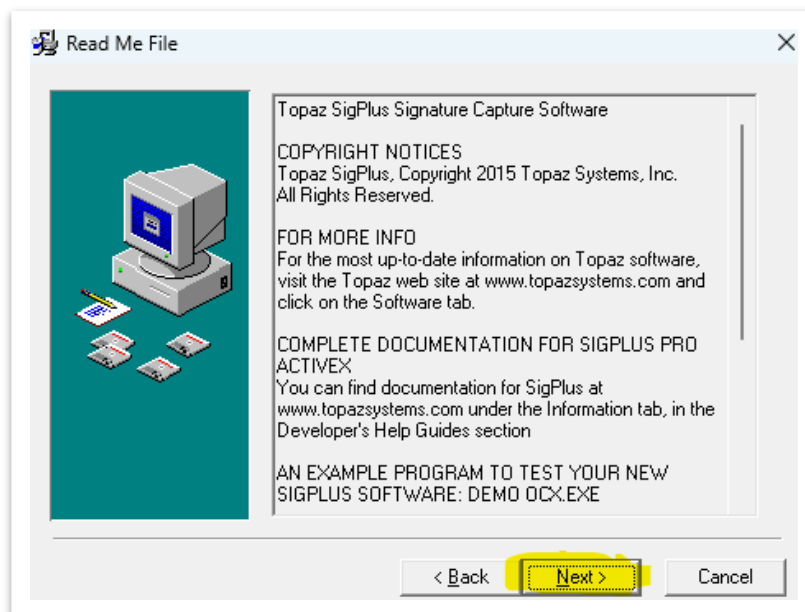
WIC Signature Pad

Model T-LBK766SE-BHSB-R (original):

Version 4.4.0.24



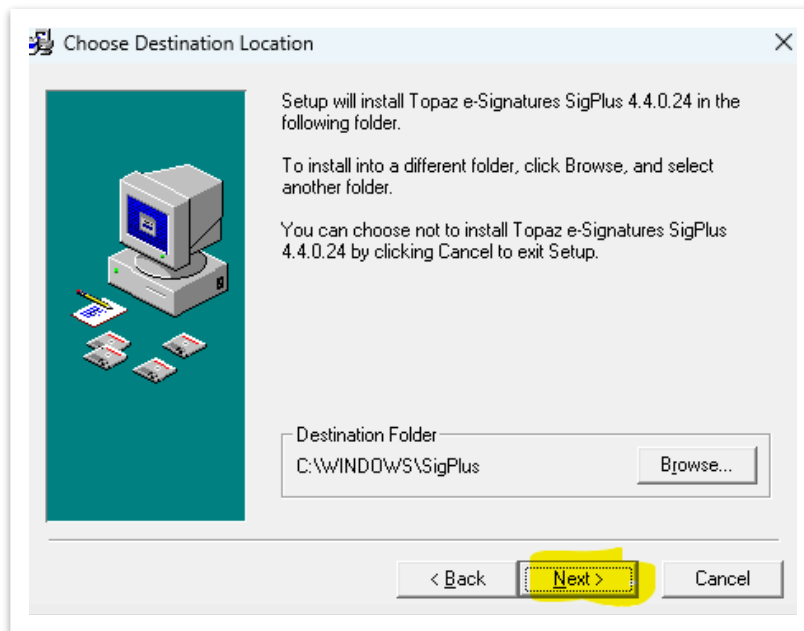
•



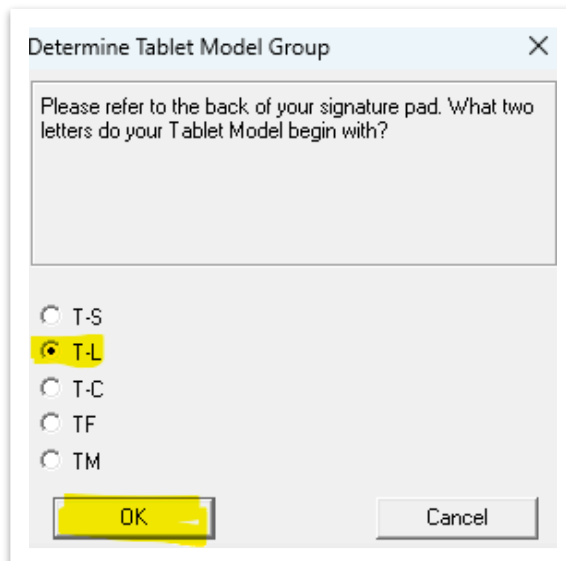
•

# Network Support Services

## How To...



•



•

Choose the Tablet

Please choose your Tablet Model from the list below.  
Please see the back of your signature pad for details.

☐ T-LBK462 or T-L462

☐ T-LBK460 or T-L460

☐ T-LBK460SE

☐ T-LBK755 or T-L755

☐ T-LBK750

☐ T-LBK750SE or T-LBK755SE

☐ T-LBK766

☒ T-LBK766SE

☐ T-LBK43LC

☐ T-LBK57GC

OK Cancel

•

Select the Connection Type

Please choose your connection type.

For USB connection, choose the "HSB" option.

For serial connection, choose the com port.

☒ HSB (USB type)

☐ Com 1

☐ Com 2

☐ Com 3

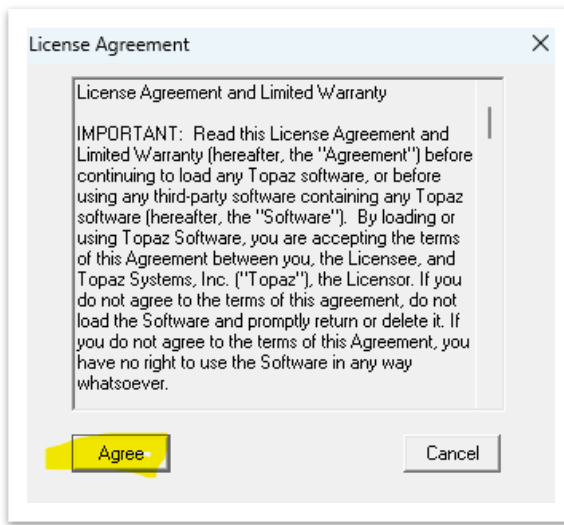
☐ Com 4

OK Cancel

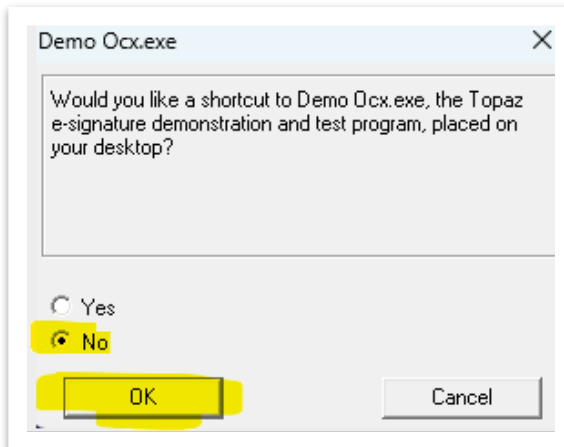
•

# Network Support Services

## How To...



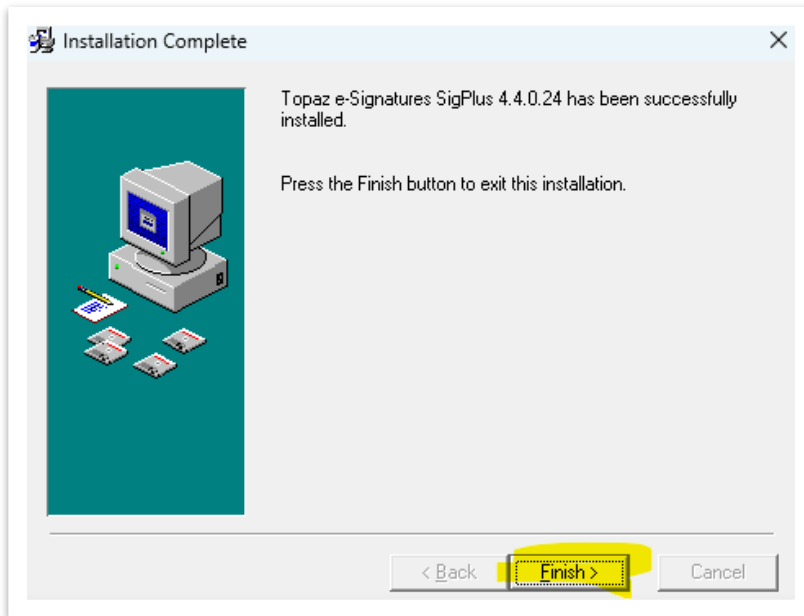
•



•

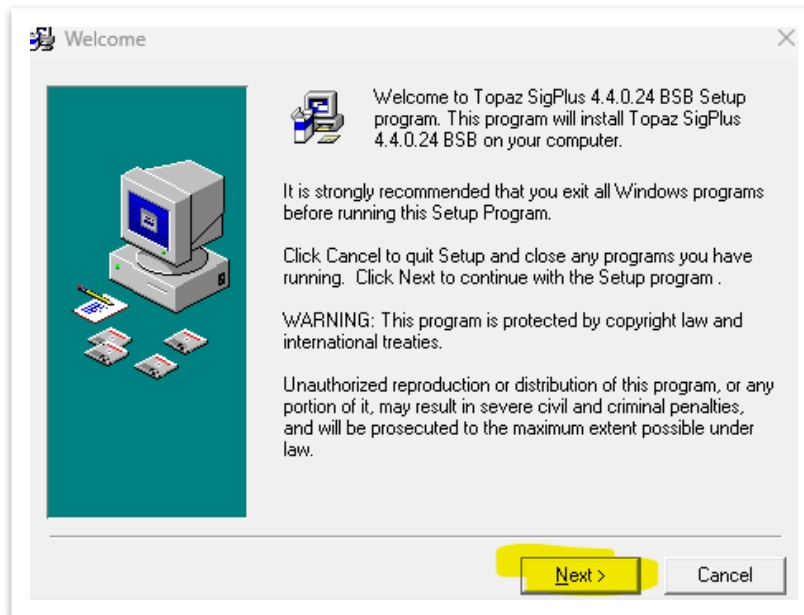
## Network Support Services How To...

---

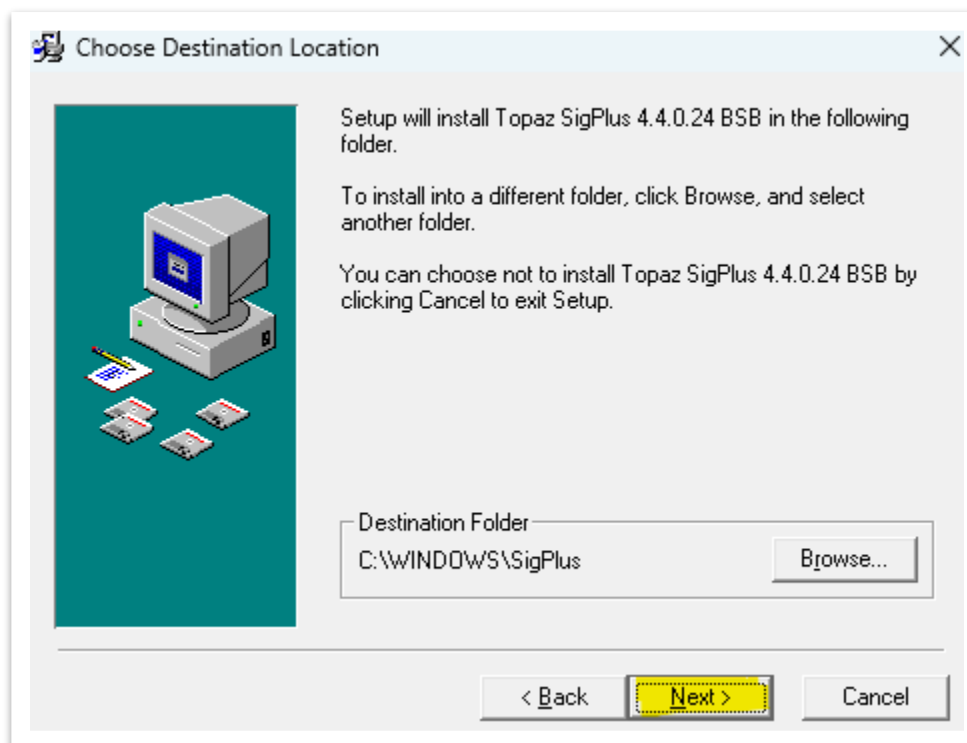


### Model T-LBK766-BBSR-R (new):

Version 4.4.0.24 BSB



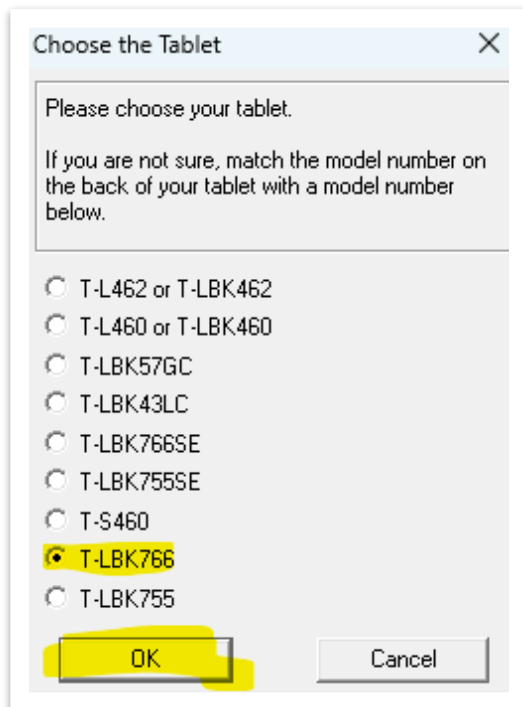
•



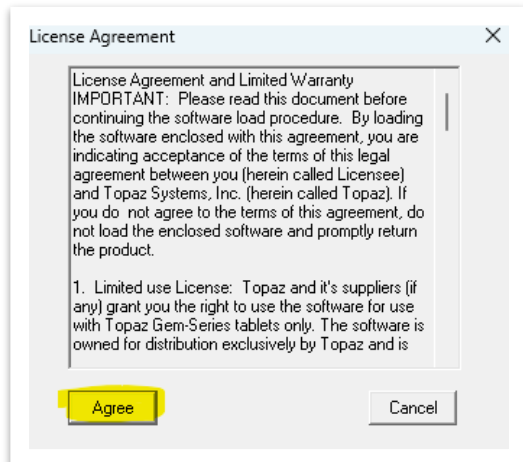
•

# Network Support Services

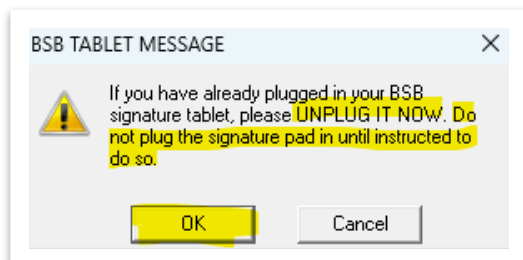
## How To...



•

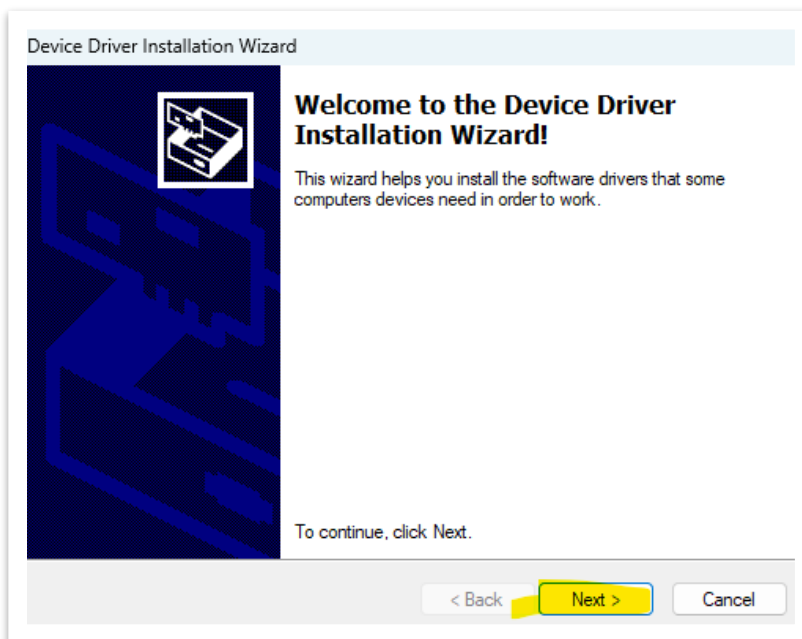
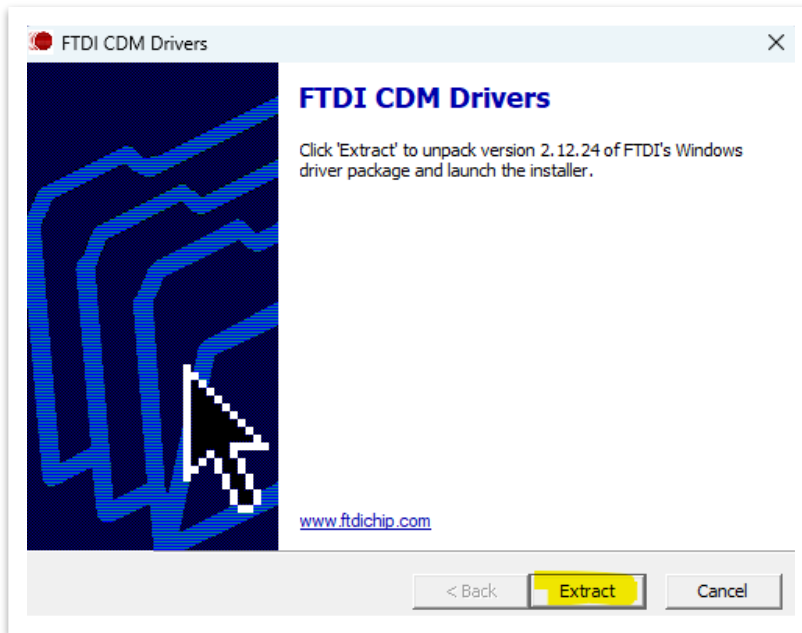


•



•

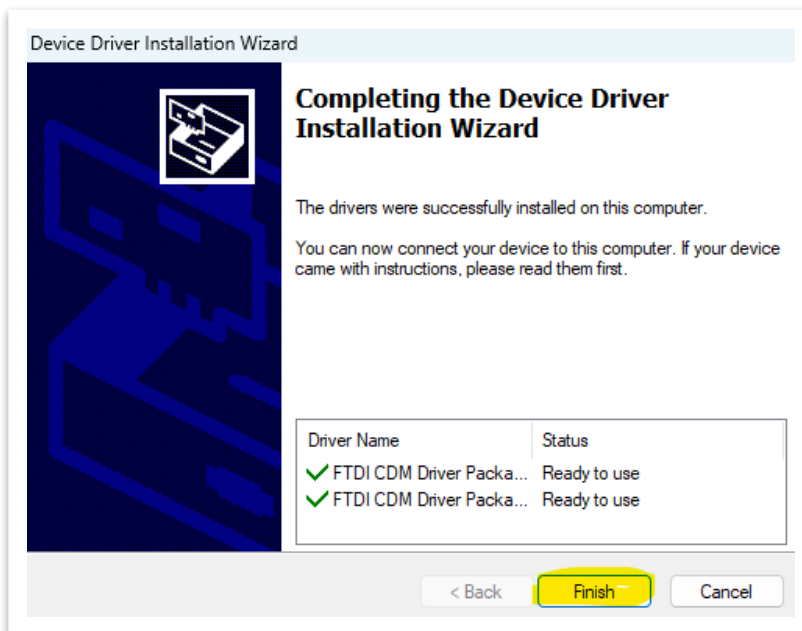
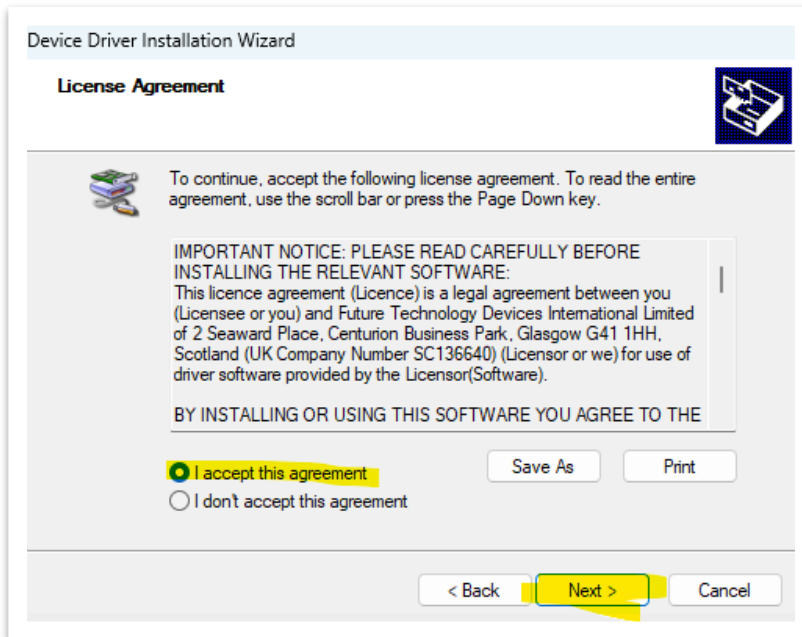
## Network Support Services How To...





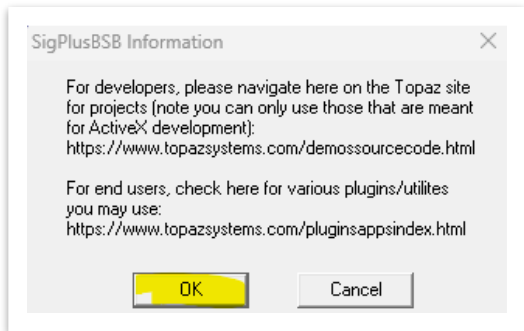
# Network Support Services

## How To...

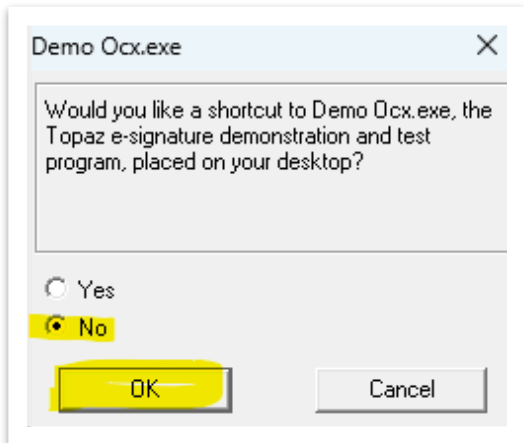


# Network Support Services

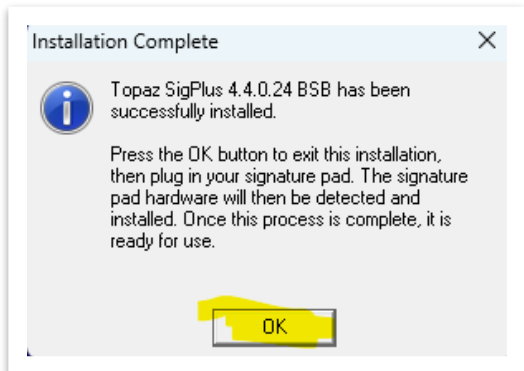
## How To...



•



•



•