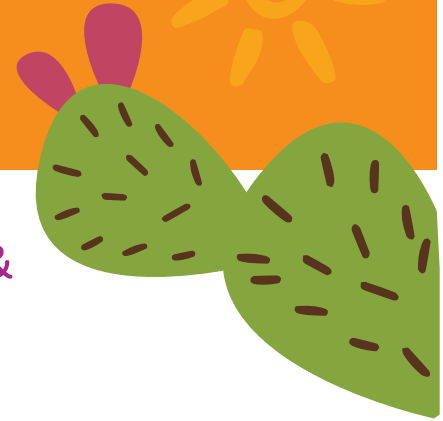




# Summer EBT for Children

## Santa Rosa Ranch School Vendor List



Summer EBT for Children benefits are redeemable at ITCA WIC & SEBTC authorized stores. Listed below are authorized stores within 100 miles from your child's school.

**Gu-Achi Trading Post**

Hwy 86 & Int.-15  
Sells, AZ 85634

[Directions](#)

Phone: (520) 361-2613

**Bashas' 27**

Sells Shopping Center  
Topawa Road, Sells, AZ 85634

[Directions](#)

Phone: (520) 383-2546

**The Store LLC**

Federal Route 1, Mile Marker 19  
Gu Vo, AZ 85634

[Directions](#)

Phone: 520-362-3981

**Olsen's Market Place IGA**

1961 Ajo Gila Bend Hwy  
Ajo, AZ 85321

[Directions](#)

Phone: (520) 387-5641

**Wal-Mart Neighborhood Market  
3377**

2823 West Valencia Road  
Tucson, AZ 85746

[Directions](#)

Phone: (520) 908-2556

**Food City 139**

1740 W. Ajo Way  
Tucson, AZ 85713

[Directions](#)

Phone: (520) 573-7060

**Food City 156**

1221 W. Irvington Road  
Tucson, AZ 85714

[Directions](#)

Phone: (520) 434-6920

**Fry's Food & Drug 20**

3640 S. 16th Avenue  
Tucson, AZ 85713

[Directions](#)

Phone: (520) 624-6934

**Wal-Mart Super Center 1612**

1650 W. Valencia  
Tucson, AZ 85746

[Directions](#)

Phone: (520) 573-3777

**Fry's Food and Drug 83**

1795 W. Valencia Rd  
Tucson, AZ 85746

[Directions](#)

Phone: (520) 348-7125

**Food City 165**

428 W. Valencia  
Tucson, AZ 85706

[Directions](#)

Phone: (520) 807-0413

WIC/SEBTC Authorized stores will have the "We Accept WIC" decal posted at the store entrance. (See decal to the right)

WE ACCEPT  
ITCA eWIC



INTER TRIBAL COUNCIL  
OF ARIZONA, INC.  
*Special Supplemental Nutrition Program  
for Women Infants and Children*

[www.itcaonline.com/WIC](http://www.itcaonline.com/WIC)



INTER TRIBAL COUNCIL OF ARIZONA, INC.  
2214 North Central Avenue | Phoenix, Arizona 85004  
ITCA is an equal opportunity provider and employer.