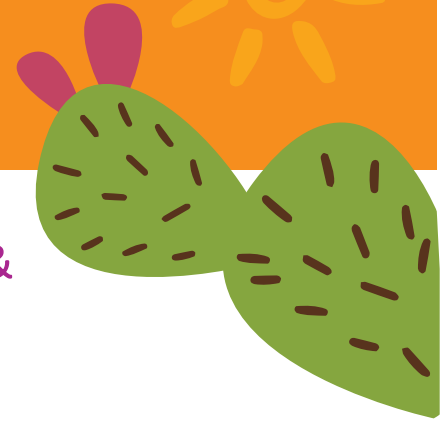




Summer EBT for Children

San Simon School Vendor List



Summer EBT for Children benefits are redeemable at ITCA WIC & SEBTC authorized stores. Listed below are authorized stores within 100 miles from your child's school.

Gu-Achi Trading Post

Hwy 86 & Int.-15
Sells, AZ 85634

[Directions](#)

Phone: (520) 361-2613

Bashas' 27

Sells Shopping Center
Topawa Road, Sells, AZ 85634

[Directions](#)

Phone: (520) 383-2546

The Store LLC

Federal Route 1, Mile Marker 19
Gu Vo, AZ 85634

[Directions](#)

Phone: 520-362-3981

Olsen's Market Place IGA

1961 Ajo Gila Bend Hwy
Ajo, AZ 85321

[Directions](#)

Phone: (520) 387-5641

Wal-Mart Neighborhood Market 3377

2823 West Valencia Road
Tucson, AZ 85746

[Directions](#)

Phone: (520) 908-2556

Food City 139

1740 W. Ajo Way
Tucson, AZ 85713

[Directions](#)

Phone: (520) 573-7060

Food City 156

1221 W. Irvington Road
Tucson, AZ 85714

[Directions](#)

Phone: (520) 434-6920

Fry's Food & Drug 20

3640 S. 16th Avenue
Tucson, AZ 85713

[Directions](#)

Phone: (520) 624-6934

Wal-Mart Super Center 1612

1650 W. Valencia
Tucson, AZ 85746

[Directions](#)

Phone: (520) 573-3777

Fry's Food and Drug 83

1795 W. Valencia Rd
Tucson, AZ 85746

[Directions](#)

Phone: (520) 348-7125

Food City 165

428 W. Valencia
Tucson, AZ 85706

[Directions](#)

Phone: (520) 807-0413

WIC/SEBTC Authorized stores will have the "We Accept WIC" decal posted at the store entrance. (See decal to the right)

WE ACCEPT
ITCA eWIC



INTER TRIBAL COUNCIL
OF ARIZONA, INC.
*Special Supplemental Nutrition Program
for Women Infants and Children*

www.itcaonline.com/WIC



INTER TRIBAL COUNCIL OF ARIZONA, INC.

2214 North Central Avenue | Phoenix, Arizona 85004

ITCA is an equal opportunity provider and employer.