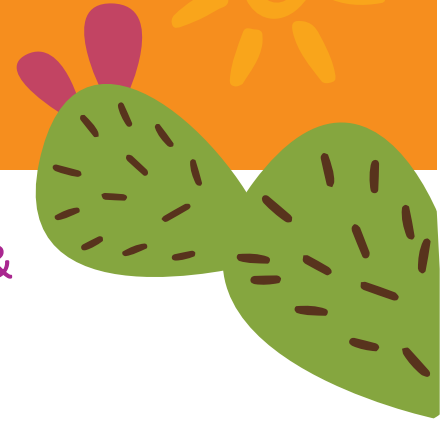




# Summer EBT for Children

## Parker Unified School District Vendor List



Summer EBT for Children benefits are redeemable at ITCA WIC & SEBTC authorized stores. Listed below are authorized stores within 100 miles from your child's school.

### Wal-Mart Super Center 4543

100 W. Riverside Drive  
Parker, AZ 85344

[Directions](#)

Phone: (928) 669-2161

### Safeway, Inc 2075

121 W. Riverside Drive  
Parker, AZ 85344

[Directions](#)

Phone: (928) 669-2243

### Food City 65

1020 Arizona Avenue  
Parker, AZ 85344

[Directions](#)

Phone: (928) 669-2300

### Salome Shopping Center

67230 Highway 60  
Salome, AZ 85348

[Directions](#)

Phone: (928) 859-3445

### Roadrunner Market

200 E. Main Street  
Quartzsite, AZ 85359

[Directions](#)

Phone: 928-927-6326

### Albertson's Food Store 3587

840 E. Hobson Way  
Blythe, CA 92225

[Directions](#)

Phone: (760) 922-4099

### Food City 108

1799 Kiowa Ave.  
Lake Havasu City, AZ 86403

[Directions](#)

Phone: (928) 855-3800

### Havasu Landing Market

1 Main Street  
Havasu Lake, CA 92363

[Directions](#)

Phone: (760) 858-4592

### Wal-Mart Super Center 2051

3396 Stockton Hill Road  
Kingman, AZ 86409

[Directions](#)

Phone: (928) 692-0555

WIC/SEBTC Authorized stores will have the "We Accept WIC" decal posted at the store entrance. (See decal to the right)

WE ACCEPT  
ITCA eWIC



INTER TRIBAL COUNCIL  
OF ARIZONA, INC.  
*Special Supplemental Nutrition Program  
for Women Infants and Children*

[www.itcaonline.com/WIC](http://www.itcaonline.com/WIC)



INTER TRIBAL COUNCIL OF ARIZONA, INC.  
2214 North Central Avenue | Phoenix, Arizona 85004

ITCA is an equal opportunity provider and employer.