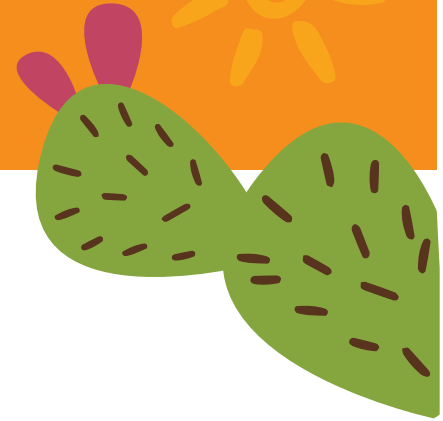




Summer EBT for Children

Gila Crossing Community School Vendor List



Summer EBT for Children benefits are redeemable at ITCA WIC & SEBTC authorized stores. Listed below are authorized stores within 100 miles from your child's school.

Fry's Food & Drug 87
5140 W. Baseline Rd.
Laveen, AZ, 85339
[Directions](#)
Phone: (602) 237-7000

Wal-Mart Super Center 2554
13055 W. Rancho Santa Fe Blvd
Avondale, AZ, 85323
[Directions](#)
Phone: (623) 935-4010

Food City 132
2709 W. Van Buren
Phoenix, AZ, 85009
[Directions](#)
Phone: (602) 272-0652

Fry's Food & Drug 46
520 E. Baseline
Phoenix, AZ, 85040
[Directions](#)
Phone: (602) 243-3012

Wal-Mart Supercenter 1746
1380 W Elliot Road
Tempe, AZ, 85284
[Directions](#)
Phone: 480-345-8686

Fry's Food & Drug 79
2626 S. 83rd Avenue
Phoenix, AZ, 85043
[Directions](#)
Phone: (623) 907-2434

Wal-Mart Super Center 1549
2020 N. 75th Avenue
Phoenix, AZ, 85035
[Directions](#)
Phone: (623) 849-1030

Food City 162
845 W. Southern Avenue
Phoenix, AZ, 85041
[Directions](#)
Phone: (602) 305-3660

Safeway, Inc. 1591
6202 S. 16th St.
Phoenix, AZ, 85040
[Directions](#)
Phone: (602) 268-0022

Fry's Food & Drug 43
2700 W. Baseline
Tempe, AZ, 85282
[Directions](#)
Phone: (602) 438-1756

Fry's Food & Drug 89
11425 W. Buckeye Rd.
Avondale, AZ, 85323
[Directions](#)
Phone: (623) 901-6160

Fry's Mercado 610
4230 W. McDowell Rd
Phoenix, AZ, 85009
[Directions](#)
Phone: (602) 415-5700

Food City 107
7227 S. Central Avenue
Phoenix, AZ, 85040
[Directions](#)
Phone: (602) 243-6770

Bashas' 11
4855 E. Warner Road
Phoenix, AZ, 85044
[Directions](#)
Phone: (480) 496-8191

WIC/SEBTC Authorized stores will have the "We Accept WIC" decal posted at the store entrance. (See decal to the right)

WE ACCEPT
ITCA eWIC



INTER TRIBAL COUNCIL
OF ARIZONA, INC.
Special Supplemental Nutrition Program
for Women Infants and Children

www.itcaonline.com/WIC



2214 North Central Avenue | Phoenix, Arizona 85004
ITCA is an equal opportunity provider and employer.