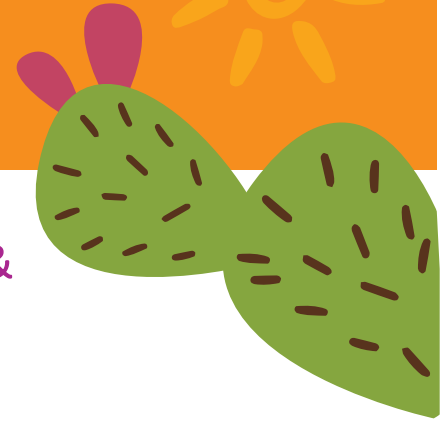




Summer EBT for Children

Dishchii'bikoh Community School Vendor List



Summer EBT for Children benefits are redeemable at ITCA WIC & SEBTC authorized stores. Listed below are authorized stores within 100 miles from your child's school.

Cibecue Commercial Center
221 S. Cooley Rd
Cibecue, AZ 85911
[Directions](#)
Phone: (928) 332-2500

Safeway, Inc. 1733
900 W. Deuce of Clubs
Show Low, AZ 85901
[Directions](#)
Phone: (928) 532-5656

Fry's Food & Drug 109
2115 US Highway 60, Suite 200,
Miami, AZ 85539
[Directions](#)
Phone: (928) 425-3276

Bashas' 08
US Hwy. 70 and SR 170
Peridot, AZ 85542
[Directions](#)
Phone: (928) 475-2391

Bashas' 78
Hwy 73
Whiteriver, AZ 85941
[Directions](#)
Phone: (928) 338-4956

Wal-Mart Super Center 1230
5401 S. White Mountain Rd.
Show Low, AZ 85901
[Directions](#)
Phone: (928) 537-3141

Wal-Mart Super Center 1334
100 S. Ragus Rd.
Claypool, AZ 85532
[Directions](#)
Phone: (928) 425-7171

Safeway, Inc 2069
20 W. White Mountain Blvd.
Lakeside, AZ 85929
[Directions](#)
Phone: (928) 367-6677

Wal-Mart Neighborhood Market 4355
715 N. Main Street
Taylor, AZ 85939
[Directions](#)
Phone: (928) 536-2543

Safeway Inc 3187
240 S. Hill St.
Globe, AZ 85501
[Directions](#)
Phone: (928) 425-5390

WIC/SEBTC Authorized stores will have the "We Accept WIC" decal posted at the store entrance. (See decal to the right)

WE ACCEPT
ITCA eWIC



INTER TRIBAL COUNCIL
OF ARIZONA, INC.
*Special Supplemental Nutrition Program
for Women Infants and Children*

www.itcaonline.com/WIC



INTER TRIBAL COUNCIL OF ARIZONA, INC.
2214 North Central Avenue | Phoenix, Arizona 85004
ITCA is an equal opportunity provider and employer.